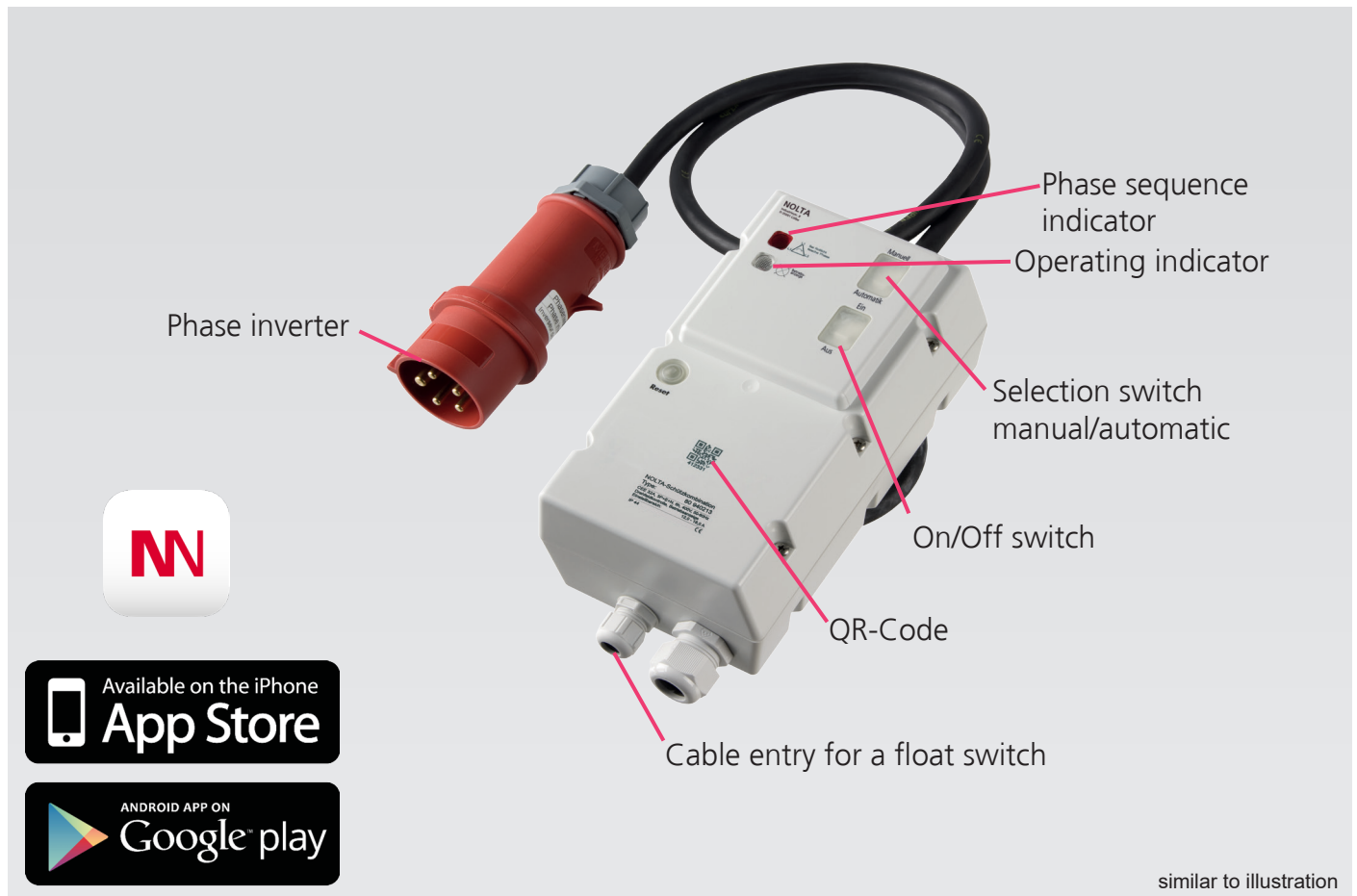




# Contactor combination with NOLTAnet



The NOLTA contactor combination has been specially designed for use in connection with portable, electric motor-driven apparatus, machines and devices and bundles the necessary protection and control technology for motors up to 15 kW in a compact, mobile housing. The contactor combination is available with a 32A CEE plug and thermal contact connection, phase inverter and rotating field control as well as an operating display can be integrated as options. A selector switch can be used to choose between manual and automatic mode so that the connected motor can be controlled via a level controller, for example. The integrated NOLTAnet module enables the operating status and hours of operation to be recorded, fault messages to be transmitted via push message and the device to be located.

## Nolta GmbH

Industriestr. 8  
35091 Cölbe  
Germany

Phone: +49 6421/98590  
Fax: +49 6421/985928  
info@nolta.de  
www.nolta.de



# NOLTA Contactor combination with NOLTAnet

## Available versions

Voltage Frequency	Plug Pins	Features	CEE 32A
400 V, 6h, 50-60 Hz	3L+N+P	Phase inverter + Phase sequence indicator	80 9401..
	3L+N+P	Phase inverter + Phase sequence indicator + Operating indicator	80 9402..

## Technical data

Switch cycles	Max. 30 starts/h
Mech. Life span	10 <sup>7</sup> switching cycles
Operating voltage	400 V AC
Nominal operating current	12A - 32A
Rated power AC3/400V	Max. 15 kW
Supply frequency	50 - 60 Hz
Temperature range	-25 - +50°C
Magn. Tripping	No
Therm. Tripping	Yes
Protection class	IP44
Supply	CEE-plug 16A / 32A
Cable entry	Motor: M 32 (11-21 mm) Control: M 16 (4,5 - 10 mm)
Connection cross-sections of the main conductors	1 - 10 mm <sup>2</sup> rigid/ 1 - 6 mm <sup>2</sup> flexible / 16 - 10 AWG
Housing	Polycarbonate (PC)
Dimensions	16A: 325 x 145 x 140 mm (L x W x H) 32A: 325 x 145 x 140 mm (L x W x H)
Weight	2.5 kg

## Adjustment range

Adjustment range	max. Back up fuse	Order-No. addition
12.00 - 18.00 A	35,0 A	..13
16.00 - 24.00 A	50,0 A	..14
23.00 - 32.00 A	63,0 A	..15

## Configuration and monitoring via NOLTAnet app

Device details

pump 1 ✎

Letztes Update 07.12.2020 09:44:49

Operating state	●	ON
State	●	OK
Connection	●	Online

📍 Industriestraße 8, 35091 Cölbe

🕒 693 h

ⓘ Motorschutz 80x

📄 N184036

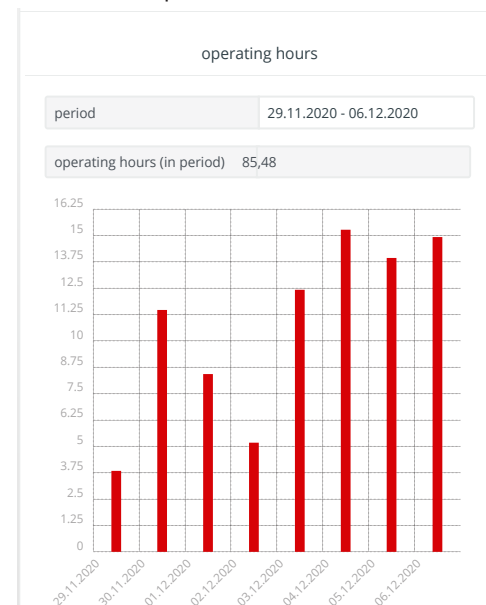
🔑 license until 14.12.2020

- Overview of operating hours and operating status in a freely selectable time interval

device card ✎ 📄 ↻

Position in the range of 20 meters

- Configuration of the device data as well as the digital inputs and push notifications
- User management
- License management
- Data export function



- Storage of all measurement data in the cloud
- Location function
- Freely configurable security zone
- Push notification when entering or leaving the security zone